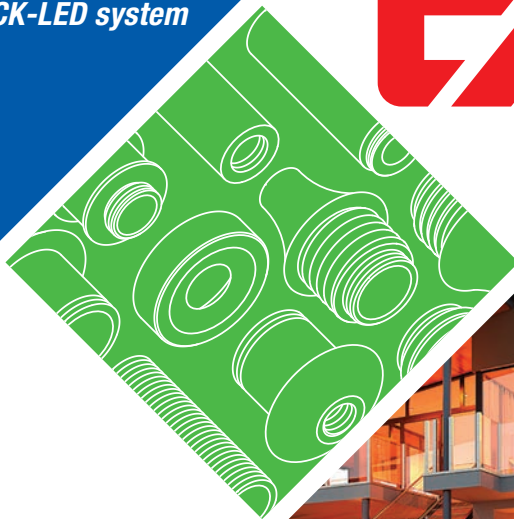




Sistema QUICK-LED
QUICK-LED system



Legenda | Legend

Corrente costante / *Constant current*

Angolo fascio luminoso / *Beam angle*

Modulo LED da incorporare / *Built-in lighting module*

Dimmerabile / *Dimmable*

Materiale Ottone / *Brass material*

Materiale Alluminio / *Aluminium material*

Ordine minimo / *Minimum order*

Sistema QUICK-LED / QUICK-LED system

Moduli LED / *LED modules*

Supporti e adattatori / *Supports and adapters*

Esempi di assemblaggio / *Assembly examples*



247 › 248

249 › 258

259 › 260

Driver

Se non diversamente indicato, i moduli LED non sono protetti da sovratensioni, sovracorrenti, sovraccarichi o cortocircuiti. Per un buon funzionamento, assicurarsi che il driver utilizzato abbia tali protezioni.

Unless otherwise indicated, LED modules are not protected against overvoltage, overcurrent, overload or short-circuits. For correct operation, check driver has such protections.

Tmax - Temperatura d'esercizio | Working temperature

Da verificare sull'applicazione finale misurata nel punto più vicino al LED.

To be tested on final application measured at the nearest point to the LED.

Dissipazione | Dissipation

I moduli LED sono autodissipati.

Al fine di una corretta dissipazione possono essere fissati su un ulteriore supporto alluminio.

LED modules are self-dissipated.

In order to obtain correct dissipation, can be fixed on an additional aluminum support.

Tolleranze | Tolerances

Valori elettrici / *Electrical values (@25°): ±10%*

Dimensionali / *Dimensional: ±0.15mm*

Ø fori / *hole Ø: ±0.1mm*

Varianti e accessori | Variants and accessories

Da definire in fase d'ordine / *To be chosen when ordering.*

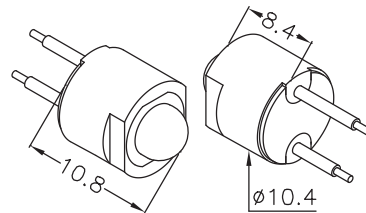
Note | Notes

I moduli LED contengono componenti che sono sensibili alle scariche elettrostatiche e possono essere maneggiati solo utilizzando le adeguate protezioni. Durante le fasi di lavorazione è necessario prestare la massima attenzione a non danneggiare i moduli e/o apportare modifiche agli stessi ed evitare di collegarli ad un alimentatore sotto tensione.

LED modules contain components sensitive to electrostatic discharges and should be handled only using adequate protection. During assembly steps, be careful not to damage LED modules and/or not to modify them. Avoid connecting the LED boards while the driver is being powered.

01XA03

Modulo LED a corrente costante
Constant current LED module



CC Input (mA)	V Typ (V)	Power Typ (W)
350	3.1	1.1
500	3.3	1.7

RA/CRI	CRI>80
LED type	PROLIGHT®
LED Q.ty	1
Dimensions	Ø 10.4 mm - h 10.8 mm

CCT CRI>80	Power Typ (W)	LED type GD			LED type GA			LED type GE		
		Im Typ	Im/W	Energy efficiency	Im Typ	Im/W	Energy efficiency	Im Typ	Im/W	Energy efficiency
2750K	1.1	105	95		123	112		136	124	
	1.7	137	81	A G	168	99	A F	185	109	A F
2950K	1.1	105	95		123	112		136	124	
	1.7	137	81	A G	168	99	A F	185	109	A F
3150K	1.1	105	95		123	112		136	124	
	1.7	137	81	A G	168	99	A F	185	109	A F
3950K	1.1	105	95		123	112		136	124	
	1.7	137	81	A G	168	99	A F	185	109	A F
5300K	1.1	105	95		123	112		136	124	
	1.7	137	81	A G	168	99	A F	185	109	A F

Accessori / Accessories

Cavi, lente, supporto e vetro / Cables, lens, holder and glass

Codice ordine standard / Standard order code

Senza accessori, tipo e lunghezza cavo da definire
Without accessories, type and lenght cable to be defined

01XA03 | XXXXX | . XXXG | X | . YYYYY |

1 Codice fisso / Fixed code 01XA03 _ XXXG

2 CCT	CRI>80
2750K	27805
2950K	29805
3150K	31805
3950K	39805
5300K	53805

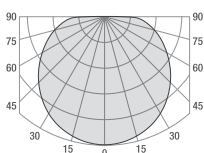
3 Flusso del LED / LED flux

Definito da EA srl in fase d'ordine, in base alla disponibilità del produttore del LED	D
Defined by EA srl when ordering, based on the availability of the LED manufacturer	A
	E

4 Variante cavo / Cable variants

Da definire in fase d'ordine / To be chosen when ordering

Curva tipica di distribuzione della luce Luminous intensity distribution



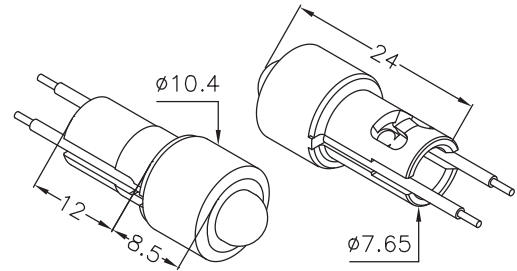
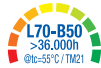
Scheda tecnica completa sul nostro sito
Complete datasheet on our web site
www.easrl.com



Riferimenti normativi / Normative requirements
EN 62031 / EN 62471 / IEC TR 62778

01XB03

Modulo LED a corrente costante
Constant current LED module



CC Input (mA)	V Typ (V)	Power Typ (W)
350	3.1	1.1
500	3.3	1.7

RA/CRI	CRI>80
LED type	PROLIGHT®
LED Q.ty	1
Dimensions	Ø 10.4 mm - h 24 mm

CCT CRI>80	Power Typ (W)	LED type GD			LED type GA			LED type GE		
		lm Typ	lm/W	Energy efficiency	lm Typ	lm/W	Energy efficiency	lm Typ	lm/W	Energy efficiency
2750K	1.1	105	95		123	112		136	124	
	1.7	137	81	A G	168	99	A F	185	109	A F
2950K	1.1	105	95		123	112		136	124	
	1.7	137	81	A G	168	99	A F	185	109	A F
3150K	1.1	105	95		123	112		136	124	
	1.7	137	81	A G	168	99	A F	185	109	A F
3950K	1.1	105	95		123	112		136	124	
	1.7	137	81	A G	168	99	A F	185	109	A F
5300K	1.1	105	95		123	112		136	124	
	1.7	137	81	A G	168	99	A F	185	109	A F

Accessori / Accessories

Cavi, lente, supporto e vetro / Cables, lens, holder and glass

Codice ordine standard / Standard order code

Senza accessori, tipo e lunghezza cavo da definire
Without accessories, type and length cable to be defined

01XB03 | XXXXX | XXXG | X | YYYYY

1 Codice fisso / Fixed code 01XB03 _ XXXG

2 CCT	CRI>80
2750K	27805
2950K	29805
3150K	31805
3950K	39805
5300K	53805

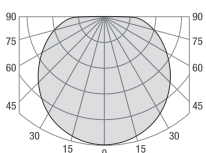
3 Flusso del LED / LED flux

Definito da EA srl in fase d'ordine, in base alla disponibilità del produttore del LED	D
Defined by EA srl when ordering, based on the availability of the LED manufacturer	A
	E

4 Variante cavo / Cable variants

Da definire in fase d'ordine / To be chosen when ordering

Curva tipica di distribuzione della luce Luminous intensity distribution



Scheda tecnica completa sul nostro sito
Complete datasheet on our web site
www.easrl.com



Riferimenti normativi / Normative requirements
EN 62031 / EN 62471 / IEC TR 62778

SP0136

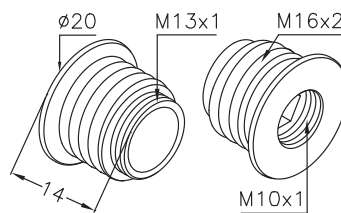
Supporto filettato / Threaded holder M16x2



Al

1

Codice / Code	Ø mm	h mm	Materiale / Material
SP0136.03	20	14	Alluminio / Aluminium



Da abbinare / To be combined with
Ghiera GH1018 o similare / GH1018 ring or similar

Scheda tecnica completa sul nostro sito
Complete datasheet on our web site
www.easrl.com



SP0137

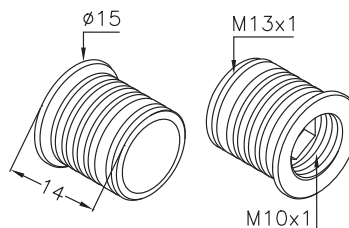
Supporto con sede per molla / Holder with spring seat



Ot

1

Codice / Code	Ø mm	h mm	Materiale / Material
SP0137.00	15	14	Ottone / Brass



Da abbinare / To be combined with
Ghiera GH1018 o similare e MOLA43 / GH1018 ring or similar and MOLA43

Scheda tecnica completa sul nostro sito
Complete datasheet on our web site
www.easrl.com



SP0138

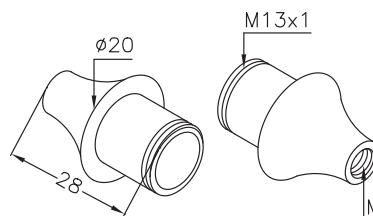
Supporto decorativo con sede per molla / Decorative holder with spring seat



Ot

1

Codice / Code	(M)	Ø mm	h mm	Materiale / Material
SP0138.01	M 8x1	20	28	Ottone / Brass
SP0138.02	M 6x1			



Da abbinare / To be combined with
Ghiera GH1018 o similare e MOLA43 / GH1018 ring or similar and MOLA43

Scheda tecnica completa sul nostro sito
Complete datasheet on our web site
www.easrl.com



SP0139

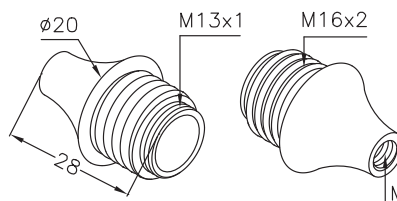
Supporto decorativo filettato / Decorative holder threaded M16x2



Ot

1

Codice / Code	(M)	Ø mm	h mm	Materiale / Material
SP0139.00	M 10x1	20	28	Ottone / Brass
SP0139.02	M 6x1			



Da abbinare / To be combined with
Ghiera GH1018 o similare / GH1018 ring or similar

Scheda tecnica completa sul nostro sito
Complete datasheet on our web site
www.easrl.com



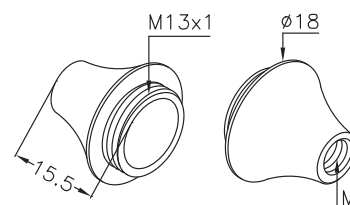
SP0142

Supporto decorativo / Decorative holder

0t



Codice / Code	(M)	Ø mm	h mm	Materiale / Material
SP0142.00	M 10x1			
SP0142.01	M 8x1	18	15.5	Ottone / Brass
SP0142.02	M 6x1			

**Da abbinare / To be combined with**

Ghiera GH1018 o similare / GH1018 ring or similar

 Scheda tecnica completa sul nostro sito
Complete datasheet on our web site
www.easrl.com



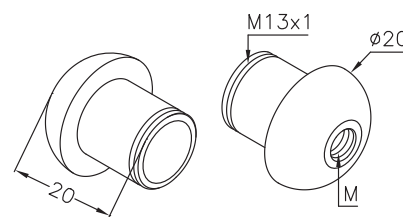
SP0143

Supporto decorativo con sede per molla / Decorative holder with spring seat

0t



Codice / Code	(M)	Ø mm	h mm	Materiale / Material
SP0143.00	M 10x1			
SP0143.01	M 8x1	20	20	Ottone / Brass
SP0143.02	M 6x1			

**Da abbinare / To be combined with**Ghiera GH1018 o similare e MOL043
GH1018 ring or similar and MOL043

 Scheda tecnica completa sul nostro sito
Complete datasheet on our web site
www.easrl.com



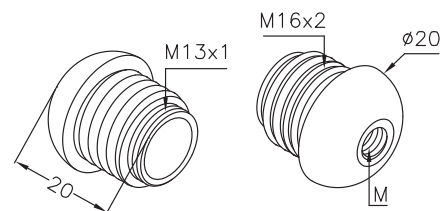
SP0144

Supporto decorativo filettato / Decorative holder threaded M16x2

0t



Codice / Code	(M)	Ø mm	h mm	Materiale / Material
SP0144.00	M 10x1			
SP0144.01	M 8x1	20	20	Ottone / Brass
SP0144.02	M 6x1			

**Da abbinare / To be combined with**

Ghiera GH1018 o similare / GH1018 ring or similar

 Scheda tecnica completa sul nostro sito
Complete datasheet on our web site
www.easrl.com



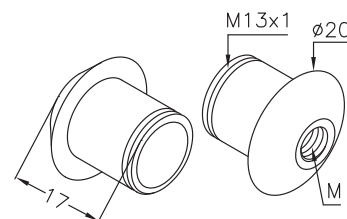
SP0145

Supporto decorativo con sede per molla / Decorative holder with spring seat

0t



Codice / Code	(M)	Ø mm	h mm	Materiale / Material
SP0145.00	M 10x1			
SP0145.01	M 8x1	20	17	Ottone / Brass
SP0145.02	M 6x1			

**Da abbinare / To be combined with**Ghiera GH1018 o similare e MOL043
GH1018 ring or similar and MOL043

 Scheda tecnica completa sul nostro sito
Complete datasheet on our web site
www.easrl.com



SP0146

Supporto decorativo filettato / *Decorative holder threaded* M16x2

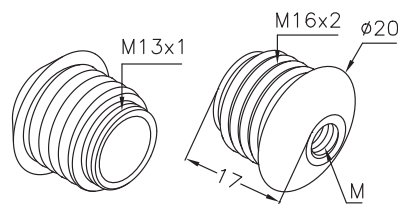


Ot

Al

1

Codice / Code	(M)	Ø mm	h mm	Materiale / Material
SP0146.00	M 10x1			
SP0146.01	M 8x1	20	17	Ottone / Brass
SP0146.02	M 6x1			
SP0146.03	M 10x1			
SP0146.04	M 8x1	20	17	Alluminio / Aluminium
SP0146.05	M 6x1			



Da abbinare / To be combined with

Ghiera GH1018 o similare / *GH1018 ring or similar*



Scheda tecnica completa sul nostro sito
Complete datasheet on our web site

www.easrl.com



SP0147

Supporto decorativo filettato / *Decorative holder threaded* M20.8x2

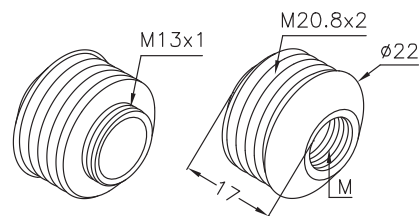


Ot

Al

1

Codice / Code	(M)	Ø mm	h mm	Materiale / Material
SP0147.00	M 10x1			
SP0147.01	M 8x1	22	17	Ottone / Brass
SP0147.02	M 6x1			
SP0147.03	M 10x1			
SP0147.04	M 8x1	22	17	Alluminio / Aluminium
SP0147.05	M 6x1			



Da abbinare / To be combined with

Ghiera GH1018 o similare / *GH1018 ring or similar*

Permette di sostituire la struttura G9 esistente con LED 1W e 2W
Possibility to replace G9 existing structure with 1W or 2W LEDs

Potenza massima dissipata / Max. dissipated power 2W



Scheda tecnica completa sul nostro sito
Complete datasheet on our web site

www.easrl.com



SP0148

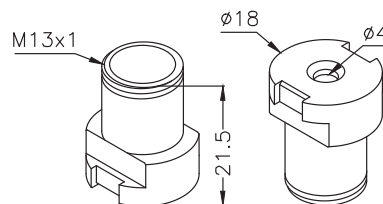
Adattatore / *Adapter* G9



Al

1

Codice / Code	Ø mm	h mm	Materiale / Material
SP0148.03	18	21.5	Alluminio / Aluminium



Da abbinare / To be combined with

Ghiera GH1018 o similare / *GH1018 ring or similar*

Permette di sostituire la struttura G9 esistente con LED 1W e 2W
Possibility to replace G9 existing structure with 1W or 2W LEDs



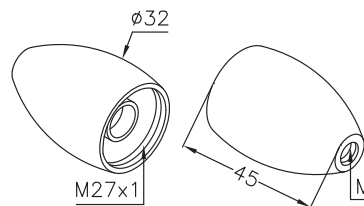
Scheda tecnica completa sul nostro sito
Complete datasheet on our web site

www.easrl.com



SP0150

Supporto decorativo / Decorative holder



Da abbinare / To be combined with

Ghiera GH1025 e lente Ø 20 mm / GH1025 ring and Ø 20 mm lens

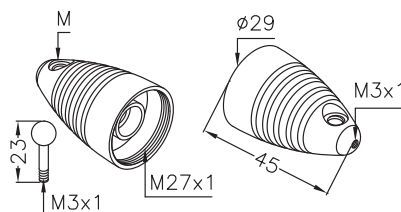
Potenza massima dissipata / Max. dissipated power 2W

Scheda tecnica completa sul nostro sito
Complete datasheet on our web site
www.easrl.com



SP0151

Supporto decorativo con uscita cavi laterale / Decorative holder with side cable exit



Da abbinare / To be combined with

Ghiera GH1026 e lente Ø 20 mm / GH1026 ring and Ø 20 mm lens

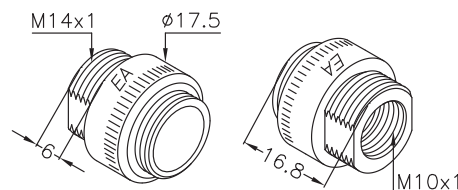
Potenza massima dissipata / Max. dissipated power 2W

Scheda tecnica completa sul nostro sito
Complete datasheet on our web site
www.easrl.com



SP0152

Adattatore per staffe / Bracket adapter R7s



Da abbinare / To be combined with

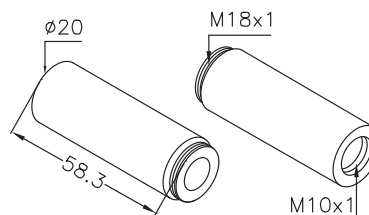
Ghiera GH1018 / GH1018 ring

Scheda tecnica completa sul nostro sito
Complete datasheet on our web site
www.easrl.com



SP0153

Supporto decorativo / Decorative holder



Da abbinare / To be combined with

Ghiera GH1027 e lente Ø 16 mm / GH1027 ring and Ø 16 mm lens

Potenza massima dissipata / Max. dissipated power 2W

Scheda tecnica completa sul nostro sito
Complete datasheet on our web site
www.easrl.com



Codice / Code	Ø mm	h mm	Materiale / Material
SP0153.00	20	58.3	Ottone / Brass
SP0153.03			Alluminio / Aluminium

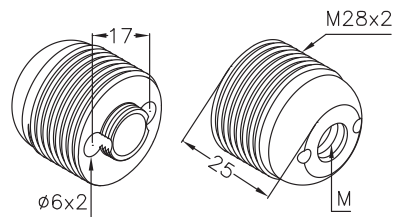
SP0154

Adattatore E14, filetto M28x2 / E14 adapter, M28x2 thread



AI

1



Codice / Code	(M)	Ø mm	h mm	Materiale / Material
SP0154.03	M 10x1	E14	25	Alluminio / Aluminium
SP0154.04	M 8x1			

Da abbinare / To be combined with

Ghiera GH1018 / GH1018 ring

Potenza massima dissipata / Max. dissipated power 2W



Scheda tecnica completa sul nostro sito
Complete datasheet on our web site

www.easrl.com



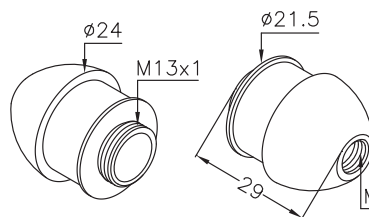
SP0155

Supporto decorativo con sede per molla reggivetro
Decorative holder with a seat for glass holding spring



Ot

1



Codice / Code	(M)	Ø mm	h mm	Materiale / Material
SP0155.00	M 10x1	24	29	Ottone / Brass
SP0155.01	M 8x1			
SP0155.02	M 6x1			

Da abbinare / To be combined with

Ghiera GH1018 o similare, MOL24 e MOL25
GH1018 ring or similar, MOL24 and MOL25

Permette di sostituire la struttura G9 esistente con LED 1W e 2W
Possibility to replace G9 existing structure with 1W or 2W LEDs



Scheda tecnica completa sul nostro sito
Complete datasheet on our web site

www.easrl.com



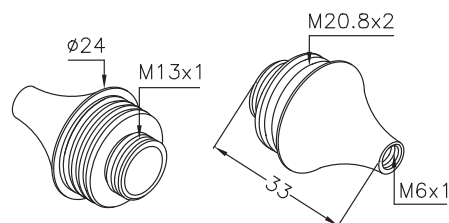
SP0156

Supporto decorativo filettato / Decorative holder threaded M20.8x2



Ot

1



Codice / Code	Ø mm	h mm	Materiale / Material
SP0156.02	24	33	Ottone / Brass

Da abbinare / To be combined with

Ghiera GH1018 / GH1018 ring

Permette di sostituire la struttura G9 esistente con LED 1W e 2W
Possibility to replace G9 existing structure with 1W or 2W LEDs



Scheda tecnica completa sul nostro sito
Complete datasheet on our web site

www.easrl.com

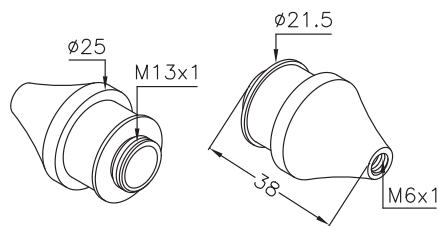


SP0157

Supporto decorativo con sede per molla reggivetro
Decorative holder with a seat for glass holding spring



Ot



Da abbinare / To be combined with

Ghiera GH1018 o similare, MOL24 e MOL25
GH1018 ring or similar, MOL24 and MOL25

Permette di sostituire la struttura G9 esistente con LED 1W e 2W
Possibility to replace G9 existing structure with 1W or 2W LEDs



Scheda tecnica completa sul nostro sito
Complete datasheet on our web site

www.easrl.com

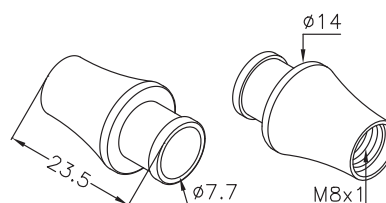


SP0159

Supporto decorativo con sede per molla reggivetro
Decorative holder with a seat for glass holding spring



Ot



Da abbinare / To be combined with

MOL34
Scheda tecnica completa sul nostro sito
Complete datasheet on our web site

www.easrl.com

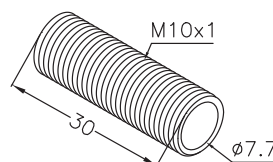


SP0162

Supporto filettato M10x1 / Holder M10x1 threaded



Al



Potenza massima dissipata / Max. dissipated power

1W
Scheda tecnica completa sul nostro sito
Complete datasheet on our web site

www.easrl.com



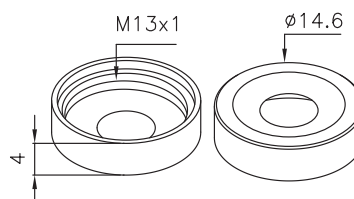
GH1018

Ghiera / Ring $\varnothing 14.6 \times h 4$ mm



Ot

Al



Abbinabile a / To be combined with

Supporti sistema QUICK-LED / QUICK-LED system support

Per bloccare / To lock

Modulo 01XA nella sua sede / 01XA module in its seat



Scheda tecnica completa sul nostro sito
Complete datasheet on our web site

www.easrl.com



Codice / Code	\varnothing mm	h mm	Materiale / Material
SP0162.00	/	30	Alluminio / Aluminium

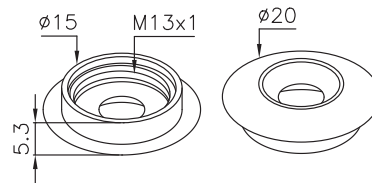
Codice / Code	\varnothing mm	h mm	Angolo / Angle	Materiale / Material
GH1018.00	14.6	4	150°	Ottone / Brass
GH1018.01				Alluminio / Aluminium

GHI019

Ghiera decorativa / Decorative ring \varnothing 20 x h 5.3 mm



Codice / Code	\varnothing mm	h mm	Angolo / Angle	Materiale / Material
GHI019.02	20	5.3	60°	Ottone / Brass



Abbinabile a / To be combined with

Supporti sistema QUICK-LED / QUICK-LED system support

Per bloccare / To lock

Modulo 01XA nella sua sede / 01XA module in its seat



Scheda tecnica completa sul nostro sito
Complete datasheet on our web site

www.easrl.com

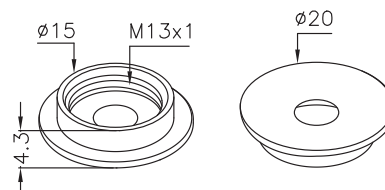


GHI020

Ghiera decorativa / Decorative ring \varnothing 20 x h 4.3 mm



Codice / Code	\varnothing mm	h mm	Angolo / Angle	Materiale / Material
GHI020.00	20	4.3	168°	Ottone / Brass
GHI020.01				Alluminio / Aluminium



Abbinabile a / To be combined with

Supporti sistema QUICK-LED / QUICK-LED system support

Per bloccare / To lock

Modulo 01XA nella sua sede / 01XA module in its seat



Scheda tecnica completa sul nostro sito
Complete datasheet on our web site

www.easrl.com

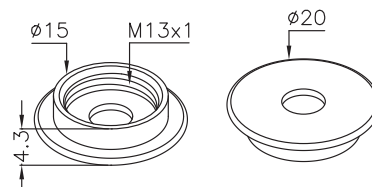


GHI021

Ghiera decorativa / Decorative ring \varnothing 20 x h 4.3 mm



Codice / Code	\varnothing mm	h mm	Angolo / Angle	Materiale / Material
GHI021.00	20	4.3	180°	Ottone / Brass



Abbinabile a / To be combined with

Supporti sistema QUICK-LED / QUICK-LED system support

Per bloccare / To lock

Modulo 01XA nella sua sede / 01XA module in its seat



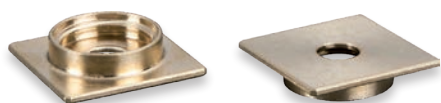
Scheda tecnica completa sul nostro sito
Complete datasheet on our web site

www.easrl.com

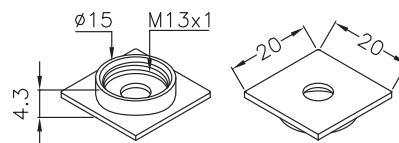


GHI022

Ghiera decorativa / Decorative ring 20 x 20 x h 4.3 mm



Codice / Code	mm	h mm	Angolo / Angle	Materiale / Material
GHI022.00	20 x 20	4.3	180°	Ottone / Brass
GHI022.01				Alluminio / Aluminium



Abbinabile a / To be combined with

Supporti sistema QUICK-LED / QUICK-LED system support

Per bloccare / To lock

Modulo 01XA nella sua sede / 01XA module in its seat



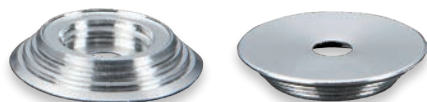
Scheda tecnica completa sul nostro sito
Complete datasheet on our web site

www.easrl.com



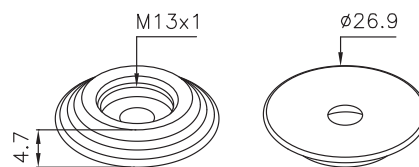
GHI024

Ghiera decorativa / Decorative ring Ø 26.9 x h 4.7 mm



AI

1



Abbinabile a / To be combined with

Supporti sistema QUICK-LED / QUICK-LED system support

Per bloccare / To lock

Modulo 01XA nella sua sede / 01XA module in its seat

 Scheda tecnica completa sul nostro sito
Complete datasheet on our web site
www.easrl.com



GHI025

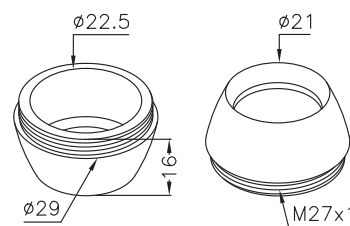
Ghiera / Ring Ø 29 x h 16 mm



Ot

AI

1



Per / For Supporto SP0150 / SP0150 support

Per bloccare / To lock

Modulo 01XA nella sua sede / 01XA module in its seat

 Scheda tecnica completa sul nostro sito
Complete datasheet on our web site
www.easrl.com



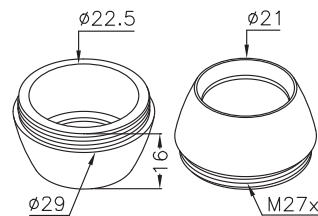
GHI026

Ghiera / Ring Ø 29 x h 16 mm



Ot

1



Per / For Supporto SP0151 / SP0151 support

Per bloccare / To lock

Modulo 01XA nella sua sede / 01XA module in its seat

 Scheda tecnica completa sul nostro sito
Complete datasheet on our web site
www.easrl.com



GHI027

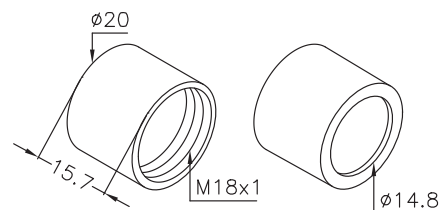
Ghiera / Ring Ø 20 x h 15.7 mm



Ot

AI

1



Per / For Supporto SP0153 / SP0153 support

Per bloccare / To lock

Modulo 01XA e la lente nella sua sede
01XA module and the lens in its seat

 Scheda tecnica completa sul nostro sito
Complete datasheet on our web site
www.easrl.com



Codice / Code	Ø mm	h mm	Angolo / Angle	Materiale / Material
GHI027.00	20	15.7	/	Ottone / Brass
GHI027.01				Alluminio / Aluminium

GHI028

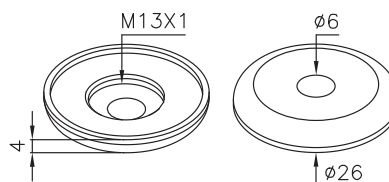
Ghiera / Ring Ø 26 x h 4 mm



AI

1

Codice / Code	Ø mm	h mm	Angolo / Angle	Materiale / Material
GHI028.01	26	4	180°	Alluminio / Aluminium



Abbinabile a / *To be combined with*
Supporto SP0154 / *SP0154 support*

Per bloccare / *To lock*

Modulo O1XA nella sua sede / *O1XA module in its seat*



Scheda tecnica completa sul nostro sito
Complete datasheet on our web site

www.easrl.com



GHI030

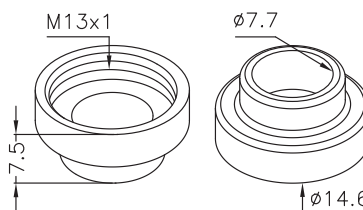
Ghiera adattatore / *Adapter ring* Ø 14.6 x h 7.5 mm



Ot

1

Codice / Code	Ø mm	h mm	Angolo / Angle	Materiale / Material
GHI030.00	14.6	7.5	/	Ottone / Brass



Per abbinare / *For combine*

Modulo LED O1XB ai supporti decorativi
O1XB LED module with decorative supports



Scheda tecnica completa sul nostro sito
Complete datasheet on our web site

www.easrl.com



SUP094.00

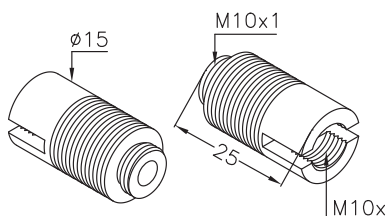
Supporto dissipatore modulare, filetto maschio-femmina M10x1
Modular heatsink holder, M10x1 male-female thread



AI

1

Codice / Code	Ø mm	h mm	Angolo / Angle	Materiale / Material
SUP094.00	15	25	/	Ottone / Brass



Potenza massima dissipata / *Max. dissipated power* 1W



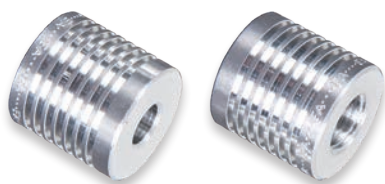
Scheda tecnica completa sul nostro sito
Complete datasheet on our web site

www.easrl.com



SUP094.01

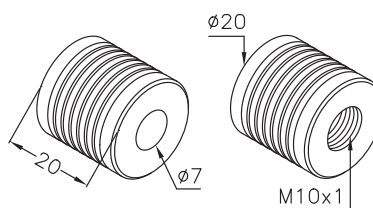
Supporto dissipatore modulare, filetto maschio-femmina M10x1
Modular heatsink holder, M10x1 male-female thread



AI

1

Codice / Code	Ø mm	h mm	Angolo / Angle	Materiale / Material
SUP094.01	20	20	/	Alluminio / Aluminium



Potenza massima dissipata / *Max. dissipated power* 1W



Scheda tecnica completa sul nostro sito
Complete datasheet on our web site

www.easrl.com

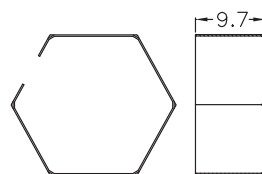


MOL24

Molla reggivetro per vetro con foro Ø 22 mm
Glass holding spring for glass with Ø 22 mm hole



Codice / Code	h mm	Fissaggio / Fixing
MOL24	9.7	A scatto / Snap-in



Abbinabile a / To be combined with

Supporti SP0155 e SP0157 / SP0155 or SP0157 support



Scheda tecnica completa sul nostro sito
Complete datasheet on our web site

www.easrl.com

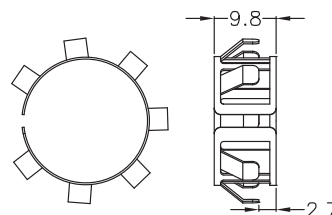


MOL25

Molla reggivetro per vetro con foro Ø 22~24 mm
Glass holding spring for glass with hole range Ø 22~24 mm



Codice / Code	h mm	Fissaggio / Fixing
MOL25	9.8	A scatto / Snap-in



Abbinabile a / To be combined with

Supporti SP0155 e SP0157 / SP0155 or SP0157 support



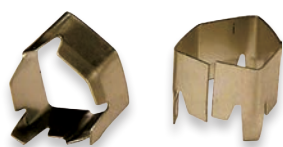
Scheda tecnica completa sul nostro sito
Complete datasheet on our web site

www.easrl.com

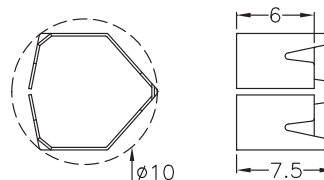


MOL34

Molla reggivetro in acciaio temperato per vetro con foro Ø 11 mm
Glass holding tempered steel spring for glass with Ø 11 mm hole



Codice / Code	h mm	Fissaggio / Fixing
MOL34	7.5	A scatto / Snap-in



Per / For Supporto / Support SP0159



Scheda tecnica completa sul nostro sito
Complete datasheet on our web site

www.easrl.com

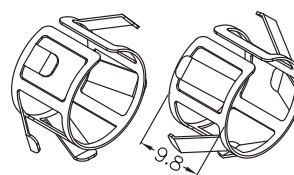


MOL043

Molla reggivetro per vetro con foro Ø 16 mm
Glass holding spring for glass with Ø 16 mm hole



Codice / Code	h mm	Fissaggio / Fixing
MOL043.00	9.8	A scatto / Snap-in



Abbinabile a / To be combined with

Supporti SP0137, SP0138, SP0143 e SP0145
SP0137, SP0138, SP0143 or SP0145 supports



Scheda tecnica completa sul nostro sito
Complete datasheet on our web site


www.easrl.com



01XA

Spot	Ghiera Ring	Supporti Support	Molla Spring	Esempio assemblato Assembled example	Spot	Ghiera Ring	Supporti Support	Molla Spring	Esempio assemblato Assembled example
SPO136 <i>pag. 249</i>	GHI018 <i>pag. 254</i>	SUP094.00 <i>pag. 257</i>	/		SPO146 <i>pag. 251</i>	GHI018 <i>pag. 254</i>	/	/	
SPO137 <i>pag. 249</i>	GHI018 <i>pag. 254</i>	SUP094.00 <i>pag. 257</i>	MOL043 <i>pag. 258</i>		SPO147 <i>pag. 251</i>	GHI018 <i>pag. 254</i>	/	/	
SPO137 <i>pag. 249</i>	GHI019 <i>pag. 255</i>	SUP094.00 <i>pag. 257</i>	MOL043 <i>pag. 258</i>		SPO148 <i>pag. 251</i>	GHI018 <i>pag. 254</i>	/	/	
SPO137 <i>pag. 249</i>	GHI020 <i>pag. 255</i>	SUP094.00 <i>pag. 257</i>	MOL043 <i>pag. 258</i>		SPO150 <i>pag. 252</i>	GHI025 <i>pag. 256</i>	/	/	
SPO137 <i>pag. 249</i>	GHI021 <i>pag. 255</i>	SUP094.00 <i>pag. 257</i>	MOL043 <i>pag. 258</i>		SPO151 <i>pag. 252</i>	GHI026 <i>pag. 256</i>	/	/	
SPO137 <i>pag. 249</i>	GHI022 <i>pag. 255</i>	SUP094.00 <i>pag. 257</i>	MOL043 <i>pag. 258</i>		SPO152 <i>pag. 252</i>	GHI018 <i>pag. 254</i>	/	/	
SPO137 <i>pag. 249</i>	GHI024 <i>pag. 256</i>	SUP094.00 <i>pag. 257</i>	MOL043 <i>pag. 258</i>		SPO153 <i>pag. 252</i>	GHI027 <i>pag. 256</i>	/	/	
SPO138 <i>pag. 249</i>	GHI018 <i>pag. 254</i>	/	MOL043 <i>pag. 258</i>		SPO154 <i>pag. 253</i>	GHI028 <i>pag. 257</i>	/	/	
SPO139 <i>pag. 249</i>	GHI018 <i>pag. 254</i>	/	/		SPO155 <i>pag. 253</i>	GHI018 <i>pag. 254</i>	/	MOL24 <i>pag. 258</i>	
SPO142 <i>pag. 250</i>	GHI018 <i>pag. 254</i>	/	/		SPO155 <i>pag. 253</i>	GHI018 <i>pag. 254</i>	/	MOL25 <i>pag. 258</i>	
SPO143 <i>pag. 250</i>	GHI018 <i>pag. 254</i>	/	MOL043 <i>pag. 258</i>		SPO156 <i>pag. 253</i>	GHI018 <i>pag. 254</i>	/	/	
SPO144 <i>pag. 250</i>	GHI018 <i>pag. 254</i>	/	/		SPO157 <i>pag. 254</i>	GHI018 <i>pag. 254</i>	/	MOL24 <i>pag. 258</i>	
SPO145 <i>pag. 250</i>	GHI018 <i>pag. 254</i>	/	MOL043 <i>pag. 258</i>		SPO157 <i>pag. 254</i>	GHI018 <i>pag. 254</i>	/	MOL25 <i>pag. 258</i>	

01XB

Spot	Ghiera Ring	Supporti Support	Molla Spring	Esempio assemblato Assembled example	Spot	Ghiera Ring	Supporti Support	Molla Spring	Esempio assemblato Assembled example
SPO138 <i>pag. 249</i>	GHI030 <i>pag. 257</i>	/	MOL043 <i>pag. 258</i>		SPO155 <i>pag. 253</i>	GHI030 <i>pag. 257</i>	/	MOL24 <i>pag. 258</i>	
SPO139 <i>pag. 249</i>	GHI030 <i>pag. 257</i>	/	/		SPO155 <i>pag. 253</i>	GHI030 <i>pag. 257</i>	/	MOL25 <i>pag. 258</i>	
SPO143 <i>pag. 250</i>	GHI030 <i>pag. 257</i>	/	MOL043 <i>pag. 258</i>		SPO156 <i>pag. 253</i>	GHI030 <i>pag. 257</i>	/	/	
SPO144 <i>pag. 250</i>	GHI030 <i>pag. 257</i>	/	/		SPO157 <i>pag. 254</i>	GHI030 <i>pag. 257</i>	/	MOL24 <i>pag. 258</i>	
SPO145 <i>pag. 250</i>	GHI030 <i>pag. 257</i>	/	MOL043 <i>pag. 258</i>		SPO157 <i>pag. 254</i>	GHI030 <i>pag. 257</i>	/	MOL25 <i>pag. 258</i>	
SPO146 <i>pag. 251</i>	GHI030 <i>pag. 257</i>	/	/		SPO159 <i>pag. 254</i>	/	/	MOL34 <i>pag. 258</i>	
SPO147 <i>pag. 251</i>	GHI030 <i>pag. 257</i>	/	/		SPO162 <i>pag. 254</i>	/	/	/	